

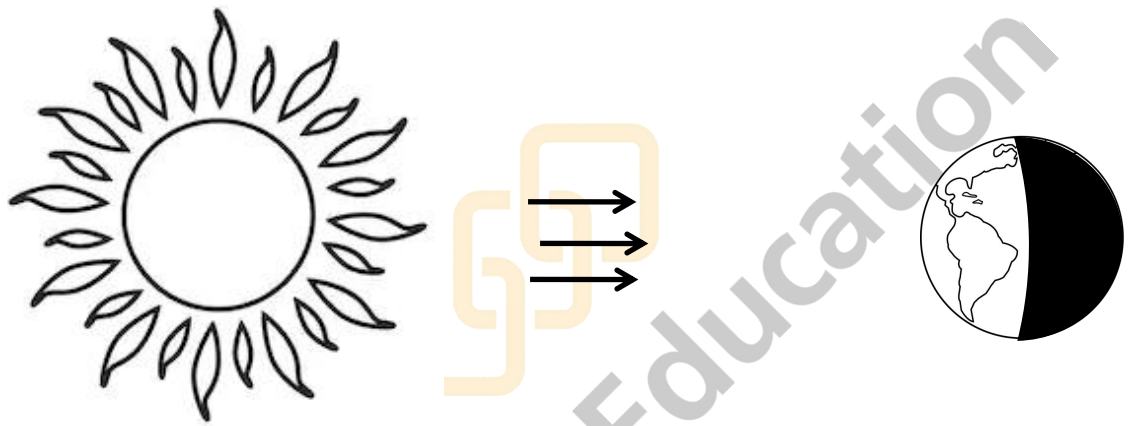
SCIENCE ANSWER KEY

- 1/ a. 24 hours
b. $365\frac{1}{4}$ days
c. 28 days

2/ Mercury

3/ A

4a/



4b/ Because the Earth spins on its axis

5/ Opaque

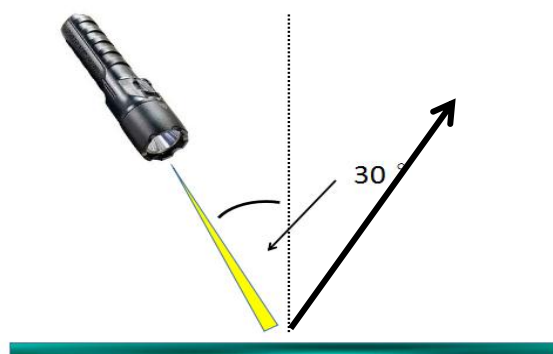
Translucent

Transparent

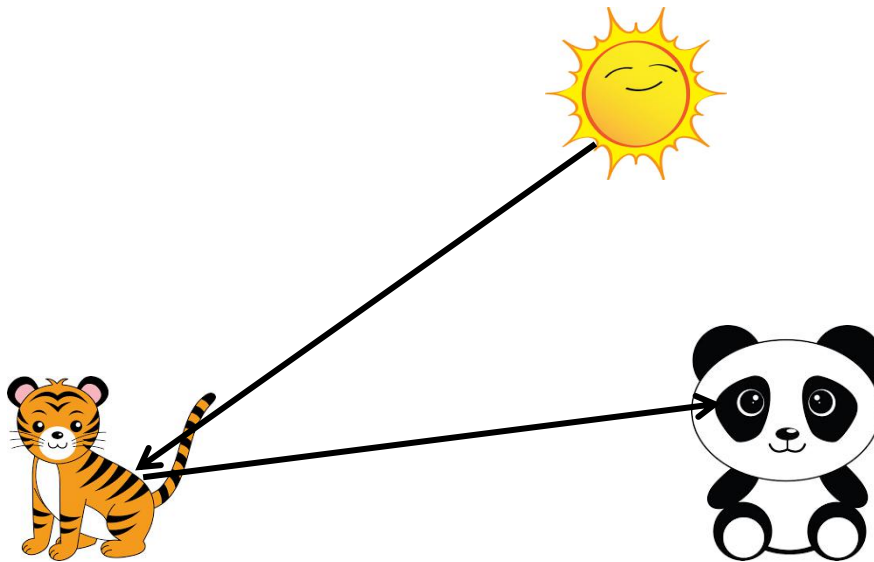
6/ iPad stars candle

7/ B

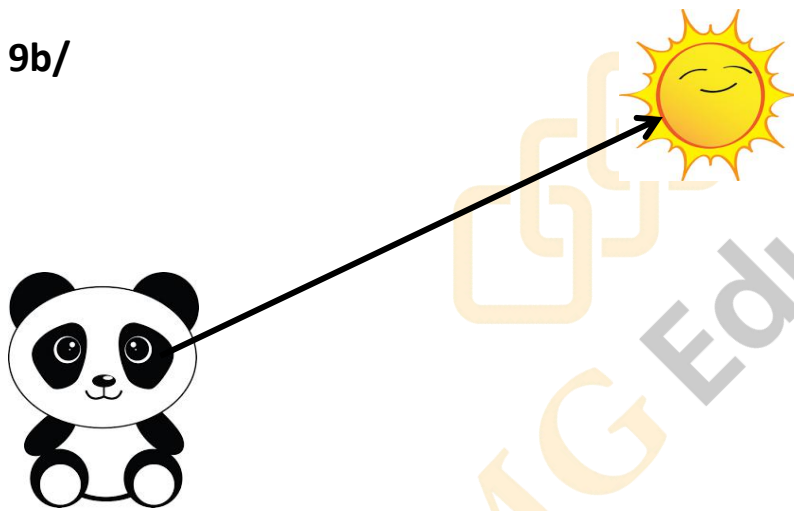
8/



9a/



9b/



10a/ B

10b/ **distance** of the torch to the box

11/ C

12/ B

13/ Newton

14/ force meter

15a/ **Sloth A**

Because sloth A has less air resistance, so it falls faster than

sloth B.

15b/ gravity

16/ Right

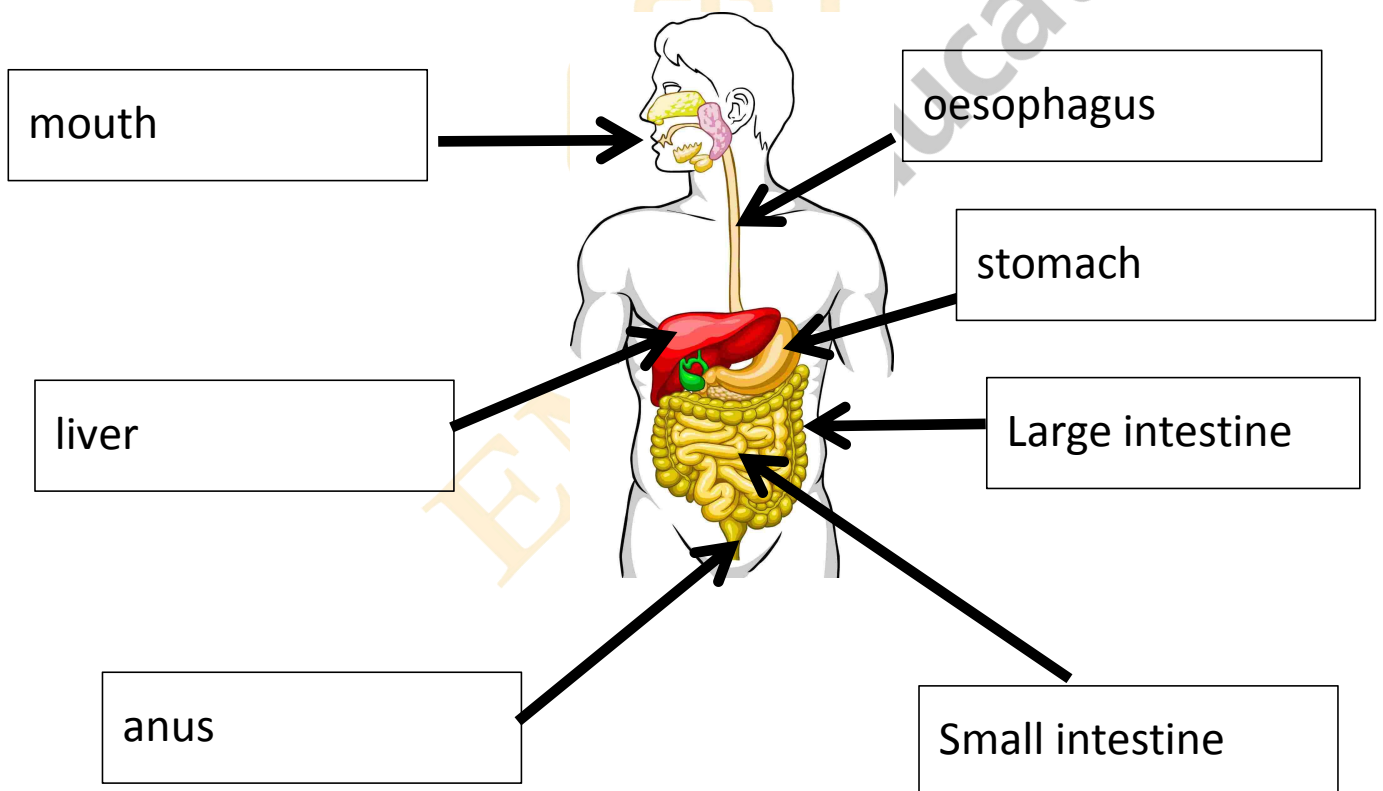
Doesnot move

Down

17a/ fish A

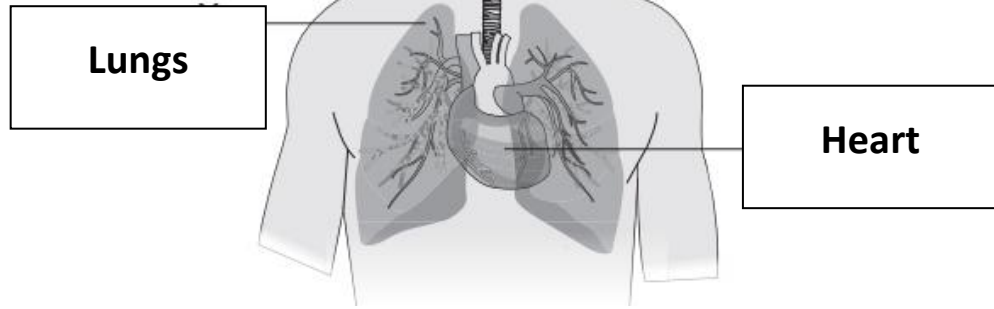
17b/ Because fish A is streamlined, so it has less water resistance and move easier.

18/



19/ Stomach has acids and enzymes to break down food into small pieces for digestion.

20/



21/ digestive system

22a/ 70 bpm

22b/ 95 bpm

22c/ Because when Sean exercises, his body muscles work and need more oxygen. Therefore, the heart beats faster to push blood around the body

23a/ plant

23b/ 3

23c/ hawk

23d/ extinct means no longer exist/ have living members.

24a/ Answer may vary: owl, snake etc

24b/ goat/ mouse/rabbit

24c/ Answer may vary: owl, snake etc

24d/ Answer may vary: population of wildcat and jackal increases etc

25/ D

26/ C

27/ D